

HAUSSMAN

COPPER ROOFING
SHINGLES

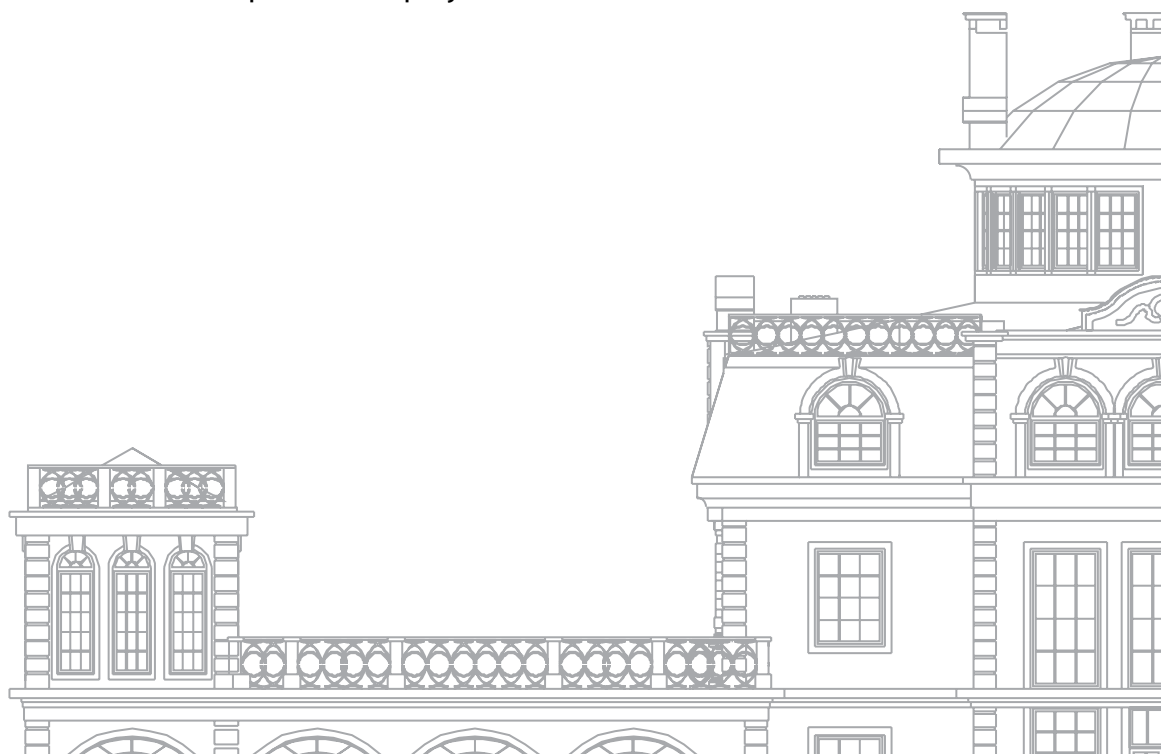


HAUSSMAN

Hauszman copper roofing shingles offer a unique opportunity to enhance the style and character of your house.

For many years the durability and stunning look of copper roofing have been a focus of attention of architects and house owners who give preference to high quality materials. Natural and genuine materials present the basis of the technology of the future, which is available for you today.

Hauszman roofing shingles are produced based on an unparalleled technology, developed by German engineers specifically for the severe Russian climate. The simple installation and flexibility, complete impermeability and the proven durability of our product make it the best possible choice for the most sophisticated projects.



Absolute advantage of Haussman copper shingles



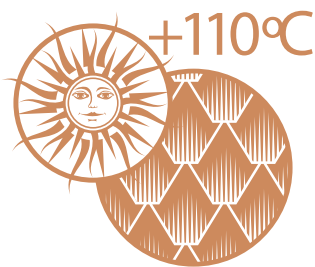
Shingles are plated with high quality copper

Haussman does not compromise quality and therefore uses 99.99% pure metal for shingles visual surface plating, thus ensuring a maximum roof lifespan.



Resilient and comfortable in rough weather

The special structure of Haussman roofing shingles deadens the sound of rain and hail. You will feel comfortable relaxing in a garage in nasty weather.

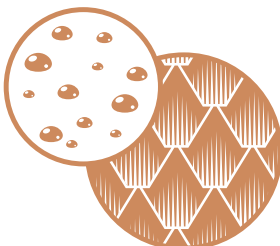


Reliable performance in all climatic zones

The SBS compound (styrene – butadiene – styrene) applied in Haussman roofing shingles, is a highly elastic polymer, giving supreme heat resistance properties to the shingles (min + 110°C), thus exceeding the requirements established by EN 544 standard (+ 90°C). This is very important for southern regions, where roof surface temperature may reach +100°C in the sun.



Haussman roofing also retains its elasticity even if exposed to extreme low temperatures, and a heavy-duty reinforced fibreglass layer ensures its strength.



Complete condensate elimination

Haussman has resolved the major issue of the classical copper roofing – condensate accumulation in the under roof space. The special roofing shingles structure prevents condensate generation even with significant temperature drops and high moisture levels.



Easy and fast installation all the year round

Installation of copper roofing does not require special equipment and tools.

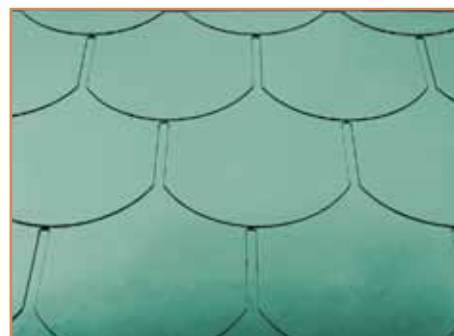
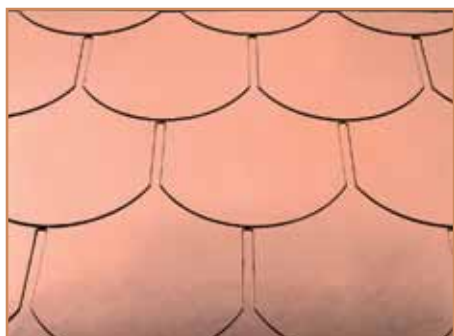
Haussman shingles are ready-to-use. Roofing installation is possible at temperatures as low as -10°C.

Haussman copper roofing shingles

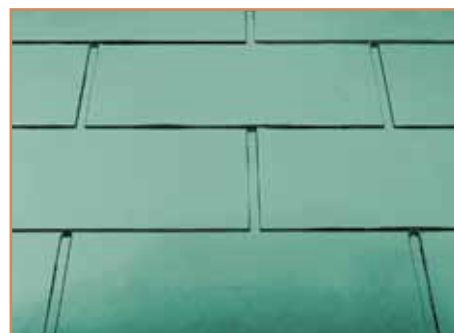
Classic line

The Classic line is a real pickup for those who want to create a stunningly beautiful house. Flexible copper roofing shingles present a unique way to turn any architect's idea into reality: elaborated curved surfaces, cupolas and towers. The beauty and durability of Haussman roofing will be a source of admiration for several generations of house owners.

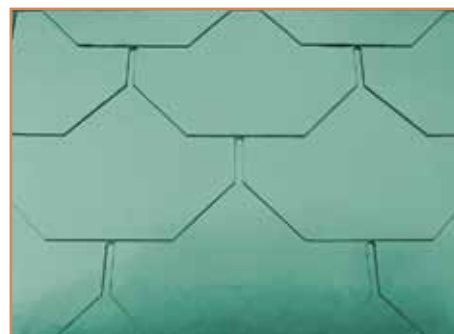
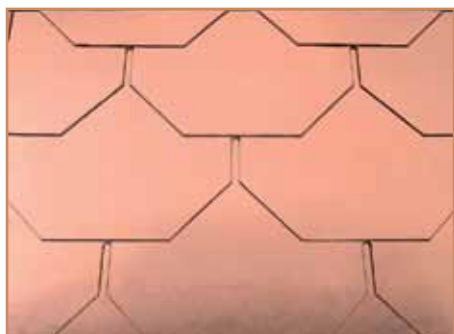
Biber



Rechteck



Trapez



Rhombus



Натуральная медь

Оксидированная медь

Патинированная медь

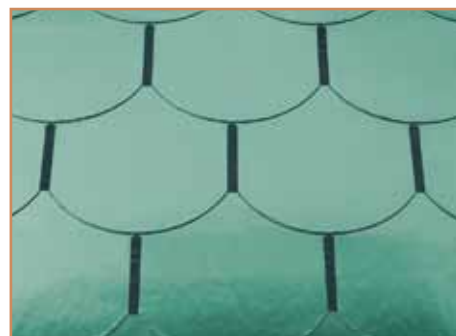
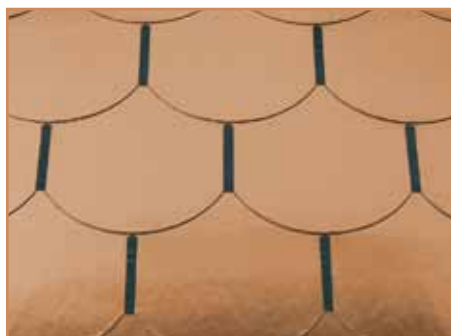
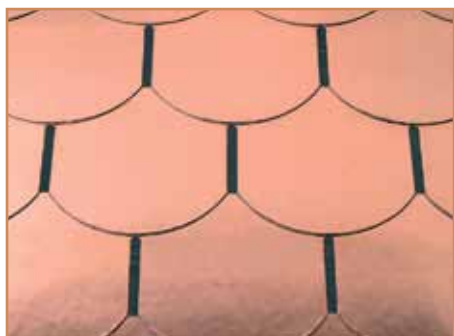


Hausman copper roofing shingles

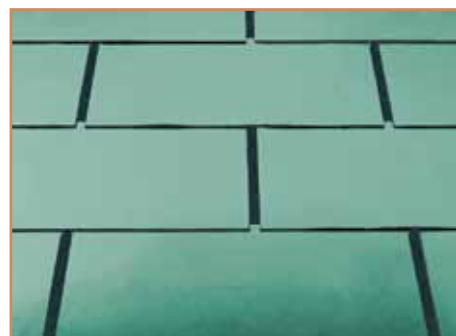
Mini Line

The Mini Line is a perfect combination of beauty and cost effectiveness. This line was specifically developed for copper roofing installation in large buildings. The roofing shingle pattern is elegantly emphasised by black veins.

Biber Mini



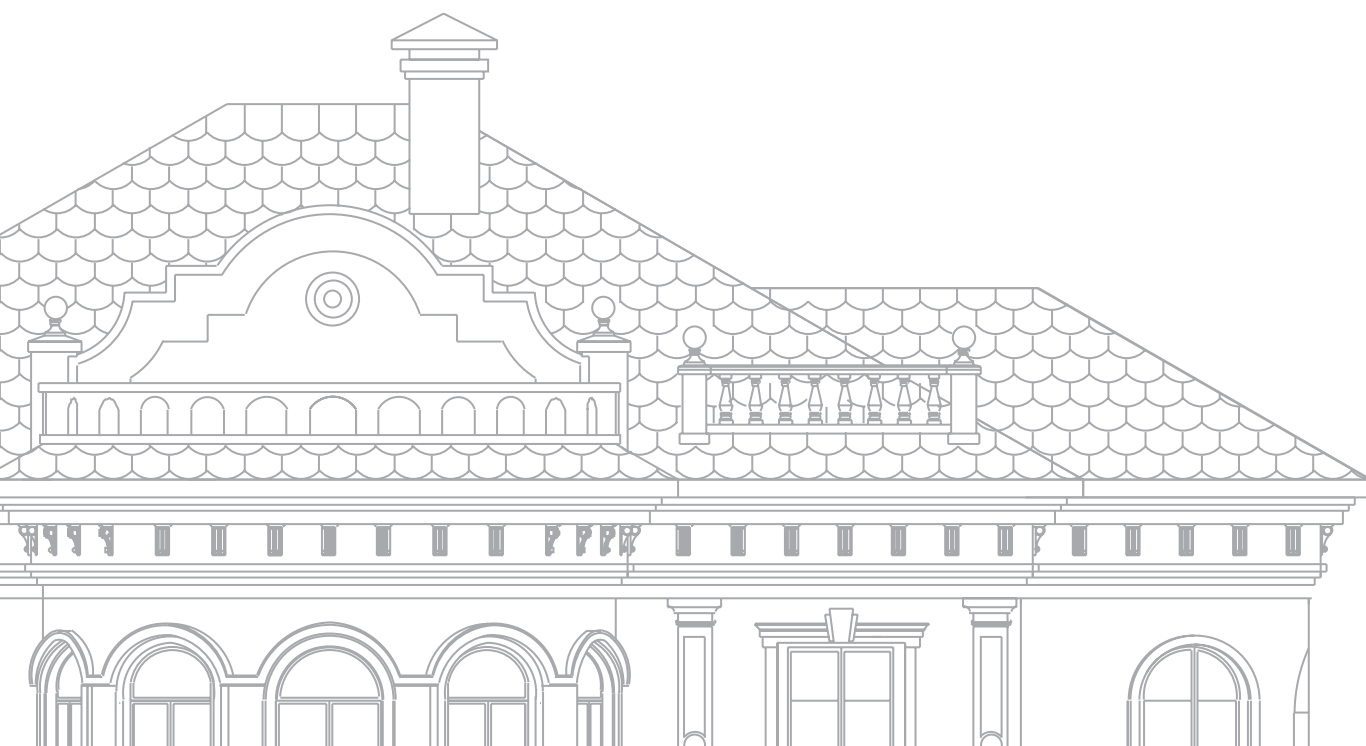
Rechteck Mini



Натуральная медь

Оксидированная медь

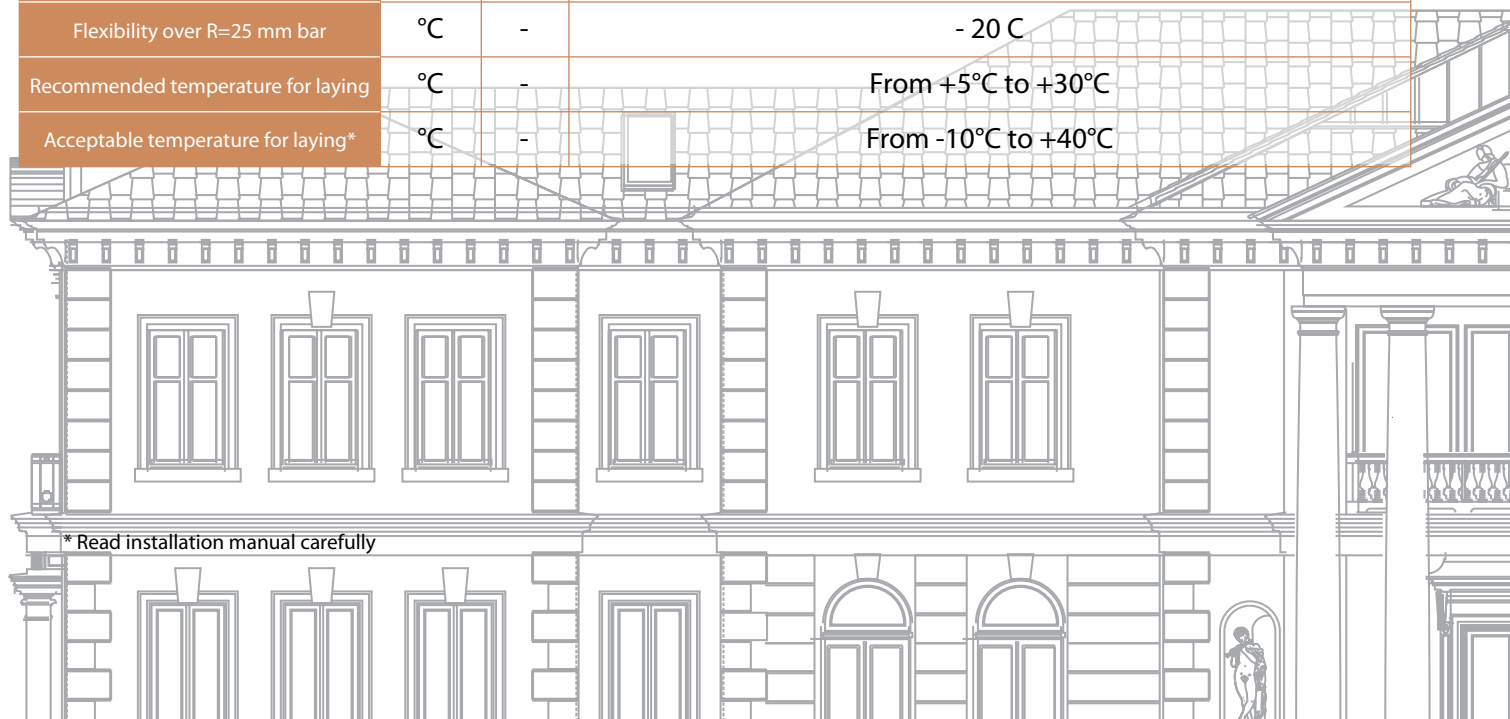
Патинированная медь



Technical data

Technical parameter	Measurement unit	EN 544 requirements	Roofing shingle model					
			Classic line				Mini line	
			Biber	Rechteck	Trapez	Rhombus	Biber Mini	Rechteck Mini
Geometry parameters								
Shingle size	mm	-	1000×345	1000×340	1000×340	790×440	1000×345	1000×340
Shingle thickness	mm	-	3	3	3	3	2,8	2,8
Plating	-	-	copper	copper	copper	copper	copper	copper
Visible sheet surface	mm	-	150	145	145	195	150	145
Metal plating width	mm	-	305	300	300	400	220	150
Weight parameters								
Shingle weight	kg/m ²	-	8,2	8,2	8,2	6,2	7,8	7,8
Fibreglass weight	kg/m ²	-	125	125	125	125	100	100
Physical and mechanical parameters								
Tensile breaking load – MD	N/ 5 cm	>600	>1500	>1500	>1500	>1500	>1200	>1200
Tensile breaking load – TD	N/ 5 cm	>400	>1500	>1500	>1500	>1500	>1200	>1200
Packaging								
Number of sheets per package	pcs	-	21	21	21	20	21	21
Covered area / 1 package	m ²	-	3,15	3,05	3,05	3,04	3,15	3,05
Number of packages per palette	pcs	-	45	45	45	40	45	45
Additional parameters								
Bitumen type	-	-	SBS modified compound					
Heat resistance	°C	+90 C	+ 110 C					
Flexibility over R=25 mm bar	°C	-	- 20 C					
Recommended temperature for laying	°C	-	From +5°C to +30°C					
Acceptable temperature for laying*	°C	-	From -10°C to +40°C					

* Read installation manual carefully



Roofing shingle cross section

Easily detachable film

Self-adhesive tape

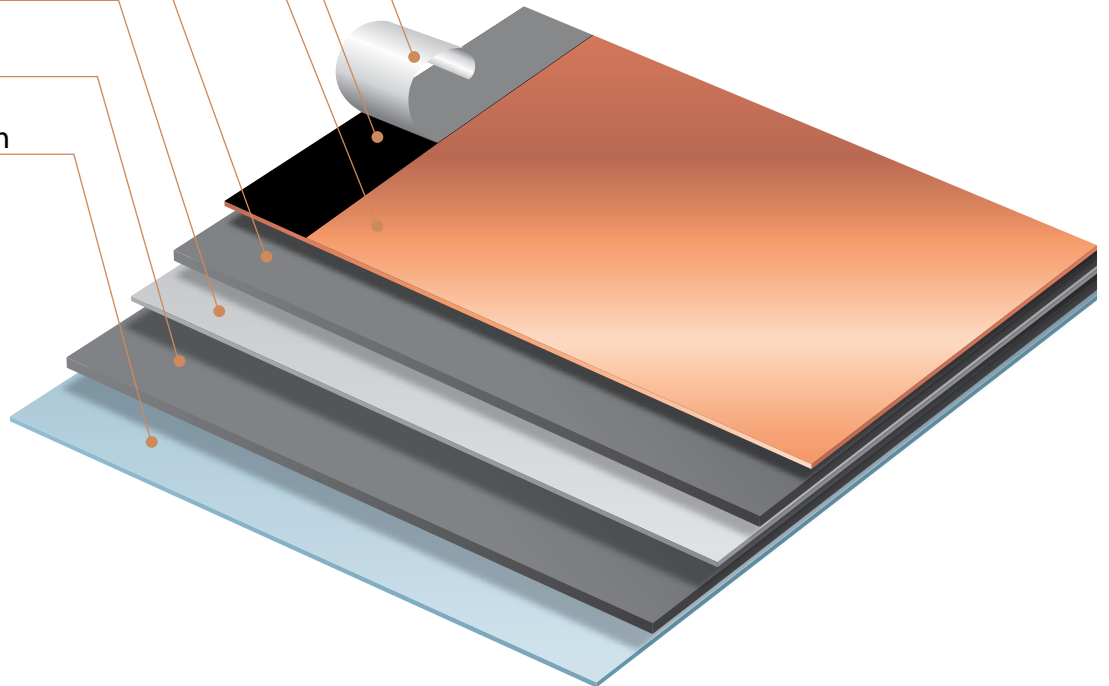
Copper plate

SBS compound

Fibreglass web

SBS compound

Easily detachable film



WARRANTY

15 YEAR

Products are covered with full registered warranty

DIN EN 544



Haussman products are produced in compliance with strict German norms EN DIN 544



Visit our web site

w w w . h a u s s m a n . r u



Your dealer:



Made by
Hausman Technology

Rev 11-12